

Stduino Setup Guide

Installing the USB Device Driver

2014/11/01



This manual explains how to set up the USB drivers for the Stduino environment. As the Stduino Programming Environment develops, this manual may be edited or revised.

Index

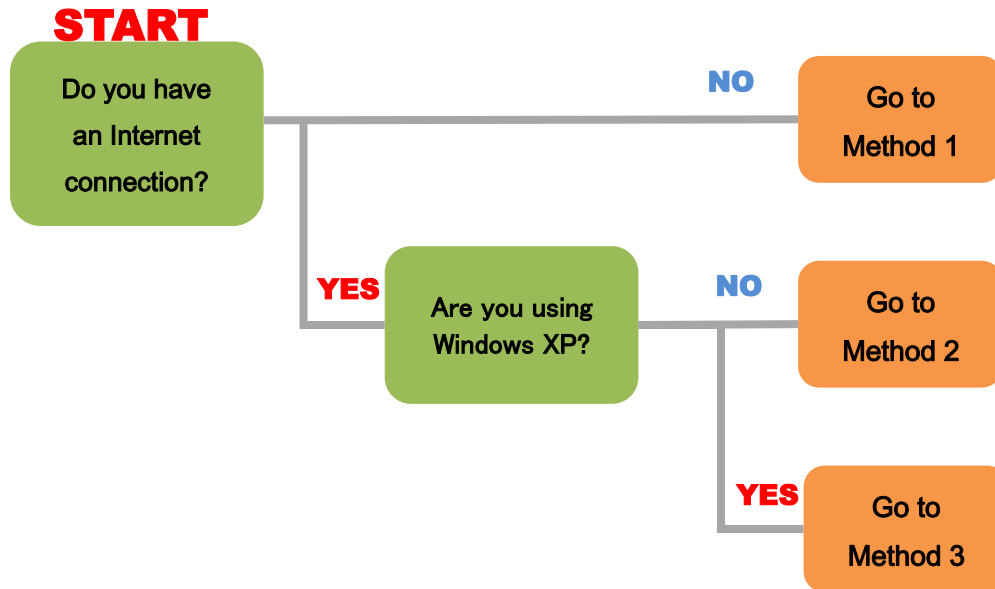
1. Getting Started.....	1
2. For Windows.....	2
3. For Mac OS X.....	12

1. Getting Started

This guide covers how to install the device driver for your Studuino. You will need to install this driver in order to use your Studuino. For Windows users, proceed to section **2.For Windows**. For Mac OS X users, proceed to section **3.For Mac OS X** .

2. For Windows

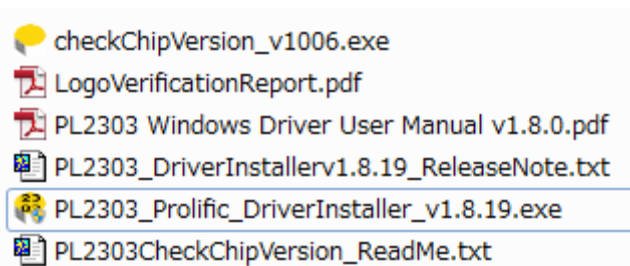
The following flowchart is for users on Windows PCs.



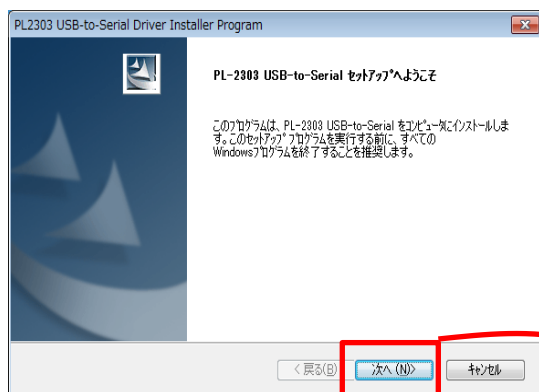
Method 1

You can also install the device driver using the DVD that came with your set if your PC doesn't have an active Internet connection.

- ① Open the Driver folder on the DVD and copy the file (PL2303_Prolific_DriverInstaller_v1.8.19.zip).
- ② Click on the file you downloaded in ① to decompress it. You should see the file in the picture below.

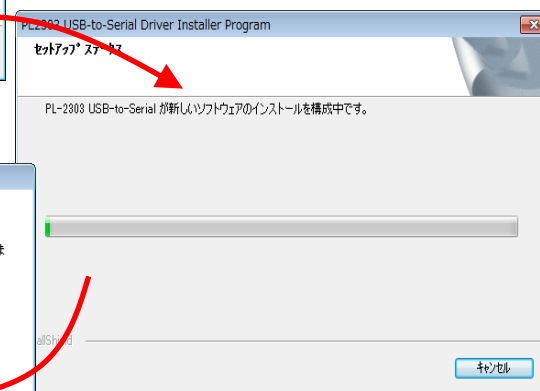


- ③ Double-click on PL2303_Prolific_DriverInstaller_v1.8.19.exe from ② and follow the steps to install the drivers.

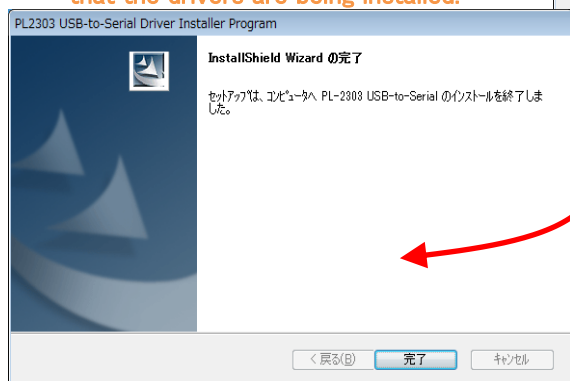


- ① Click on the Next button in the setup window to proceed.

- ② This window shows that the drivers are being installed.

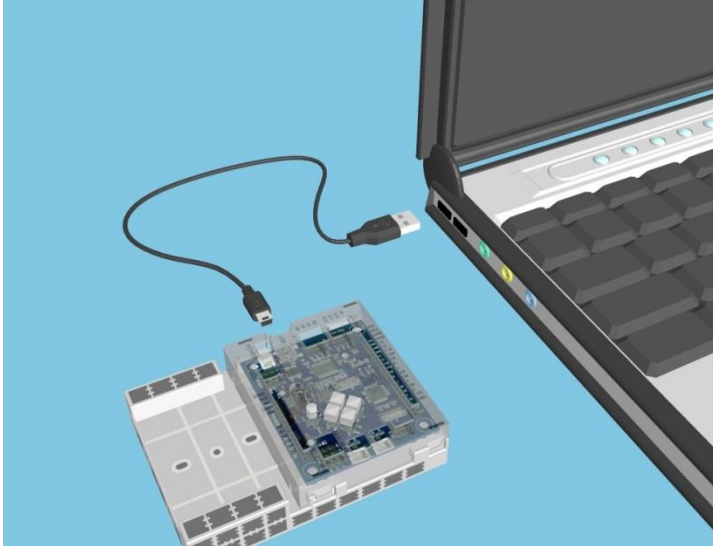


- ③ Click on the Finish button once the installation has been completed.

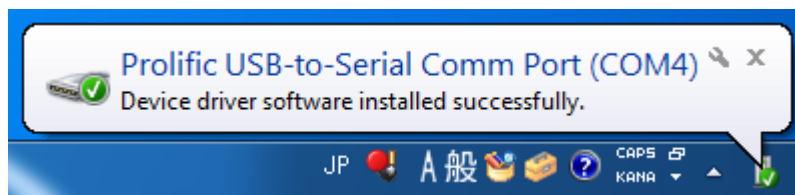


You have now installed your USB device drivers. The PC will now recognize your Studuino unit when you connect it via a USB cable.

- ④ Connect your Studuino to your PC using a USB cable.



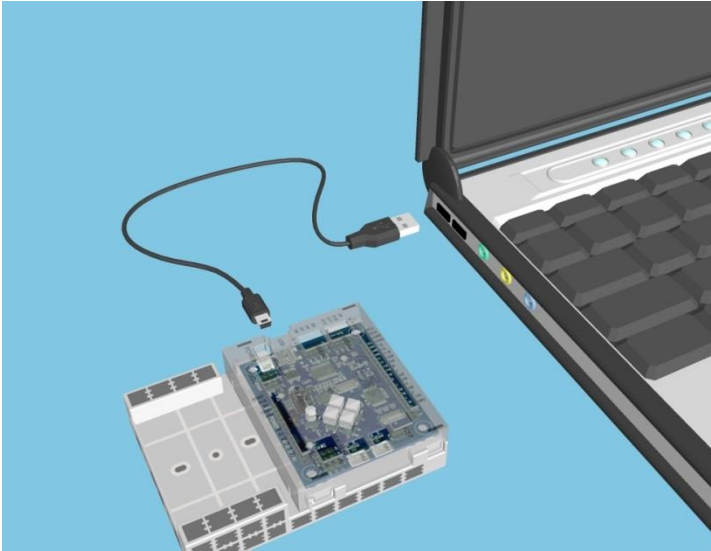
- ⑤ The USB device drivers have been installed. If you see a balloon pop-up to the lower right of your monitor which says "Device driver software installed successfully."



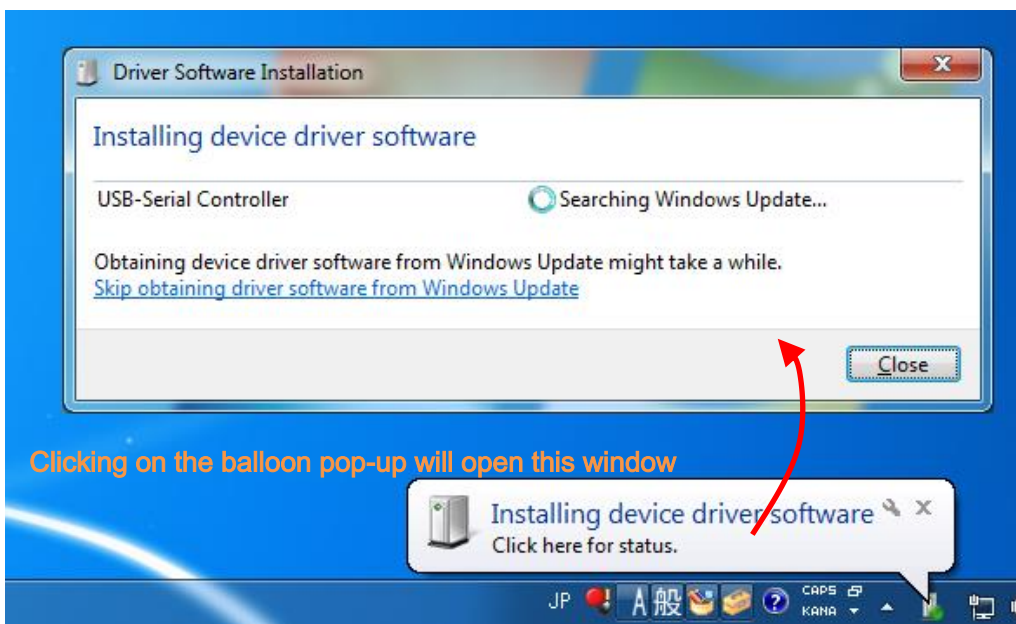
Method 2

The install for your Studuino device driver will begin automatically if you're using a Windows Vista, 7, or 8 system with an active Internet connection. Use the following steps to install your drivers.

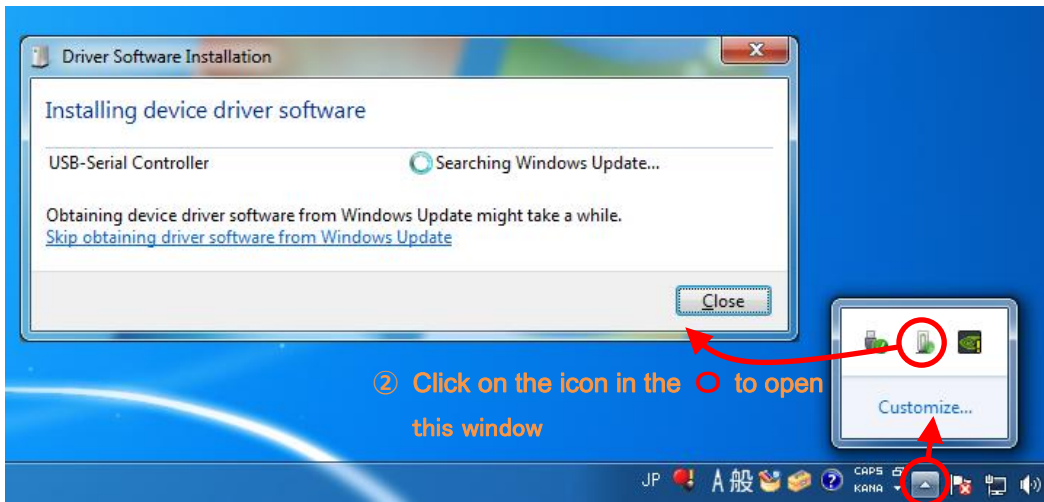
- ① Connect your Studuino to your PC using a USB cable.



- ② You will see a balloon pop-up in at the lower right of your screen which says "Installing device driver software". Click on this balloon to open the Driver Software Installation window.



If the balloon disappears, click on the \triangle on the far right of the taskbar to open the notification area. Click on the icon to open the Driver Installation Window.

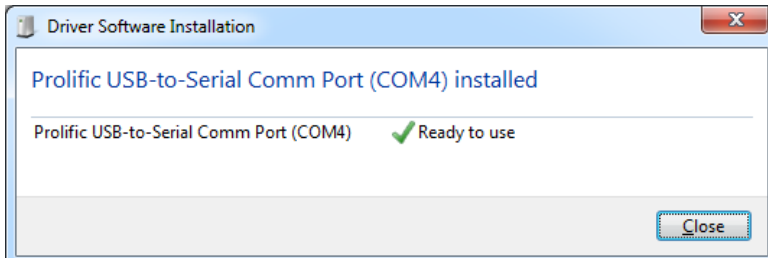


② Click on the icon in the \circ to open this window

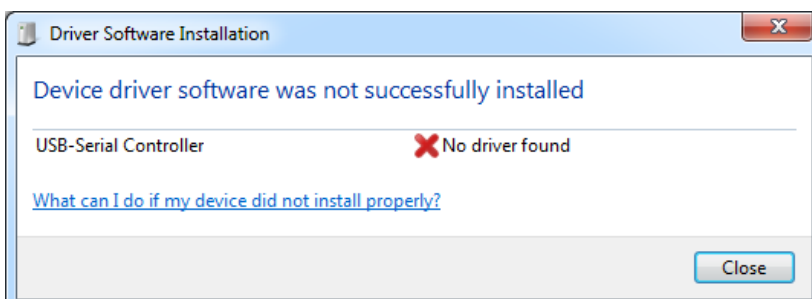
① Click on the \triangle to open the notification area

③ Wait for the results to appear (this may take 1-10 seconds).

Seeing the message below means that the USB device driver has been installed successfully.



This message means that the USB device driver has not been installed. Proceed to **Method 3**.



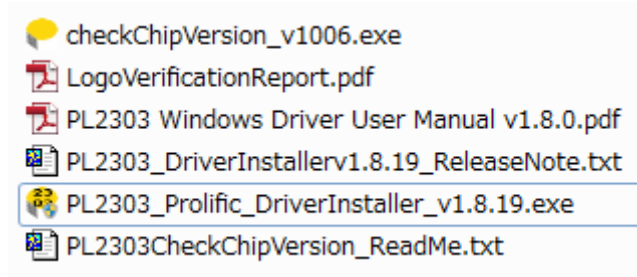
Method 3

This section covers how to download and install the USB device driver from the Studuino website.

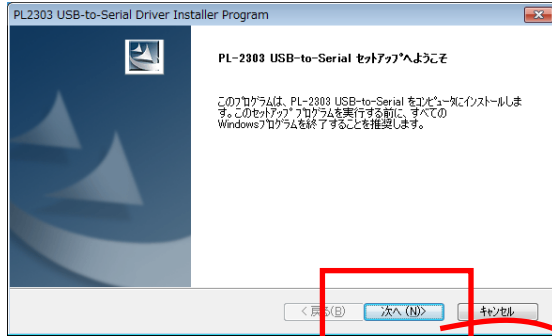
- ① Go to the Studuino website at <http://www.artec-kk.co.jp/studuino> and click on **Studuino USB device driver (Windows)** to download the driver.



- ② Click on the file you downloaded in ① (PL2303_Prolific_DriverInstaller_v1.8.19.zip) to decompress it. You should see the file in the picture below.

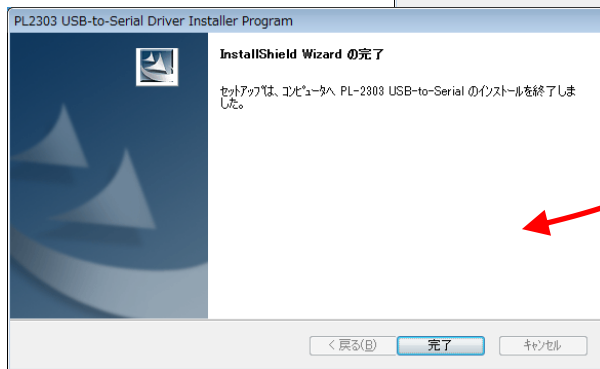
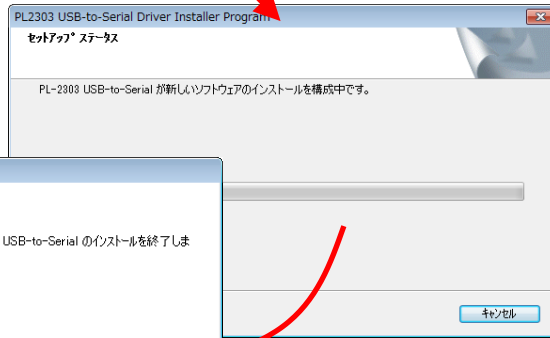


- ③ Double-click on `PL2303_Prolific_DriverInstaller_v1.8.19.exe` from ② and follow the steps to install the drivers.



- ① Click on the Next button in the setup window to proceed.

- ② This window shows that the drivers are being installed.

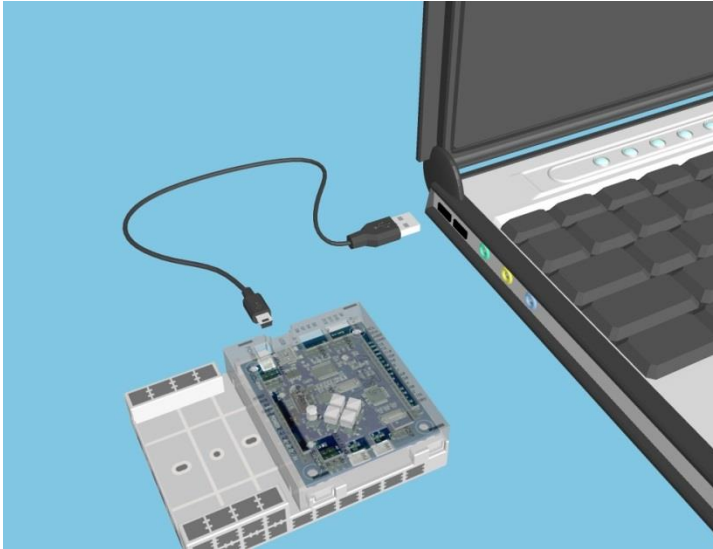


- ③ Click on the Finish button once the installation has been completed.

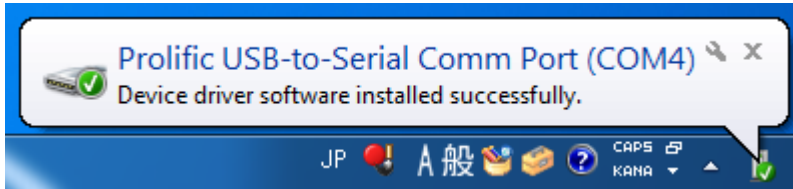
You have now installed your USB device drivers. The PC will now recognize your Studuino unit when you connect it via a USB cable.

You have now installed your USB device drivers. The PC will now recognize your Studuino unit when you connect it via a USB cable.

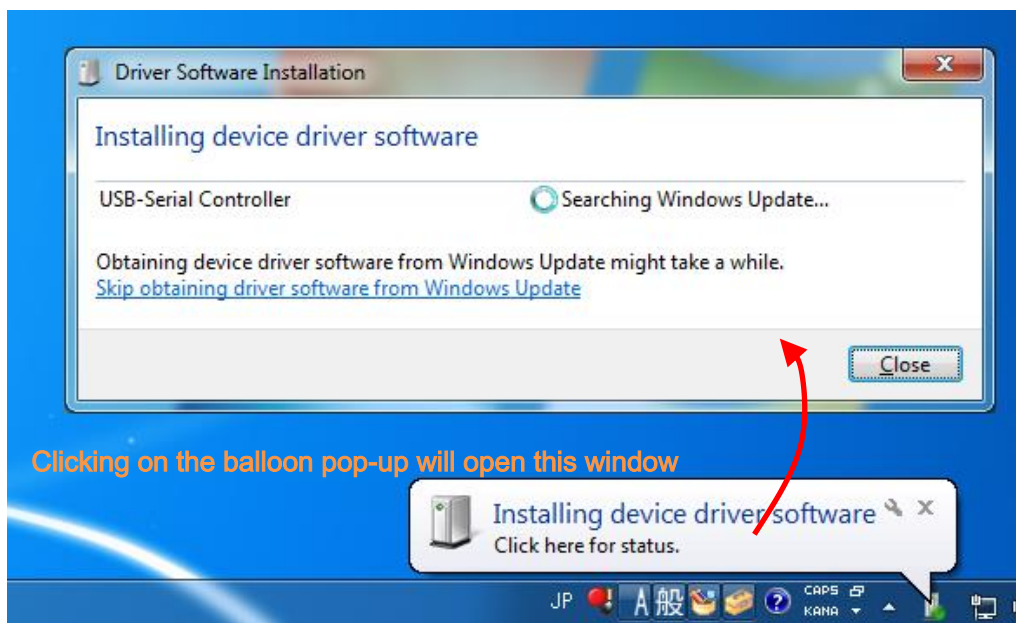
- ④ Connect your Studuino to your PC using a USB cable.



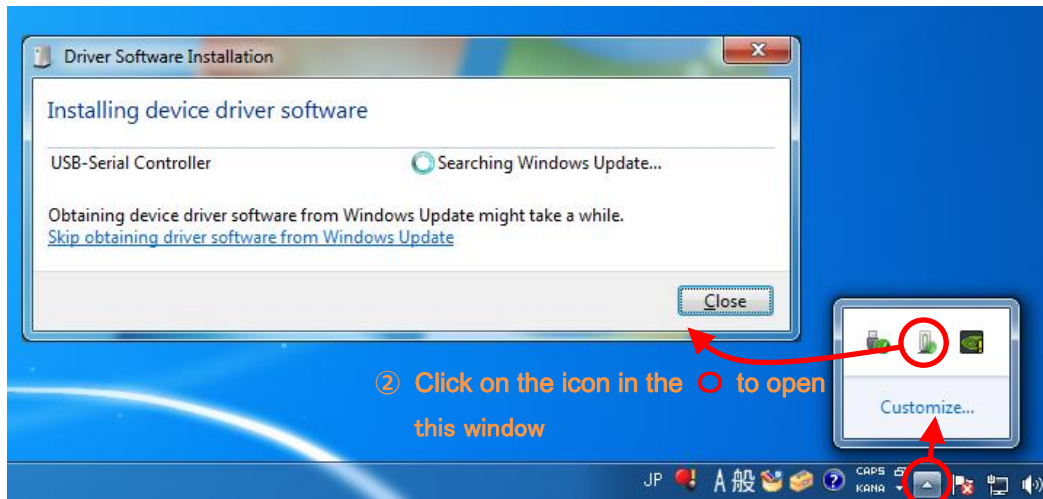
- ⑤ The USB device drivers have been installed. If you see a balloon pop-up to the lower right of your monitor which says "Device driver software installed successfully." Proceed to the next step if you see a different message.



- ⑥ You will see a balloon pop-up in at the lower right of your screen which says "Installing device driver software". Click on this balloon to open the Driver Software Installation window.

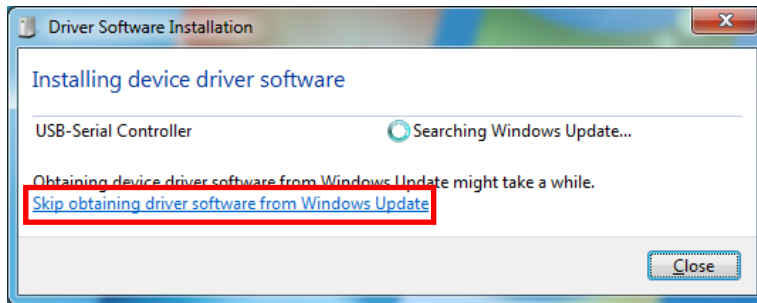


If the balloon disappears, click on the \triangle on the far right of the taskbar to open the notification area. Click on the icon to open the Driver Installation Window.

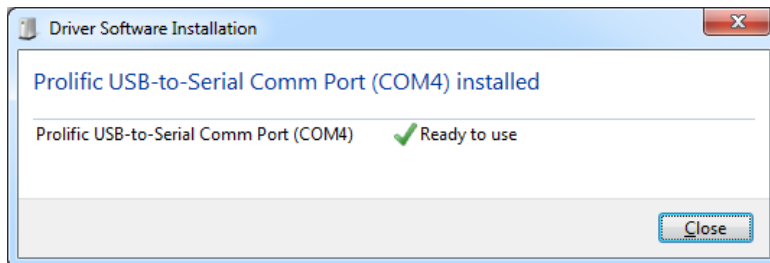


- ① Click on the \triangle to open the notification area

- ⑦ Click on "Skip obtaining driver software from Windows Update" in the window you opened in ⑥.



- ⑧ Seeing the message below means that the USB device drivers have been installed successfully.



3. For Mac OS X

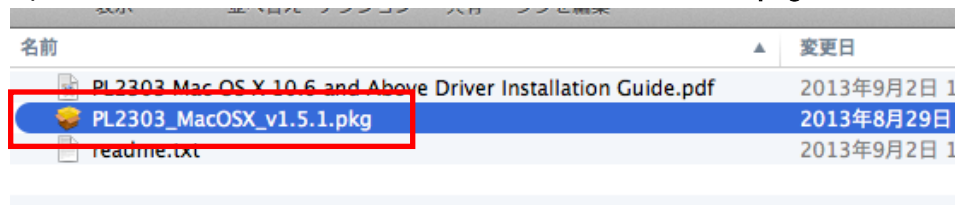
If your PC does not have an active Internet connection, you can install the device driver using the DVD that came with your set. Open the Driver folder on the DVD and copy the file md_PL2303_MacOSX-10.6up_v1.5.1.zip to your computer.

Go to the Studuino website at <http://www.artec-kk.co.jp/studuino> and click on "Studuino USB device driver (MAC)" to download the drivers.



① Open the downloaded file and run PL2303_MacOSX_v1.5.1.pkg.

② Open the downloaded file and run PL2303_MacOSX_v1.5.1.pkg.



③ Follow the steps to install the USB drivers and restart your computer to complete the installation.