

# Studuino:bit Software

---

## Setup Guide

Created April 24th, 2019

### Revision History

Date Revised	Revised Contents
2019/04/24	First release



## Index

1. Getting Started .....	1
2. Installing the Software .....	1
2.1. Downloads.....	1
2.2. Installation .....	1
2.3. Start Up .....	2
2.4. Uninstalling the Software.....	4
3. Installing USB Device Drivers.....	6
3.1. Downloads.....	6
3.2. Installation .....	6

## 1. Getting Started

This manual describes the installation and start up process for the Windows version of the Studuino:bit Software.

This text may be expanded or amended in the future to account for changes in the product or other factors.

## 2. Installing the Software

Download the installation file, then begin the setup process. If the PC to which you intend to install the software does not have an internet connection, download on another PC with an internet connection and then transfer to the intended PC using a USB flash drive or other storage device.

Performing the installation requires administrator privileges.

### 2.1. Downloads

- ① Go to the ArtecRobo 2.0 website at <https://www.artec-kk.co.jp/artecrobo2/en/>
- ② Go to the **Software & Downloads** section.
- ③ Click the **Software Download** button under the **Windows** heading on the next page.

### 2.2. Installation

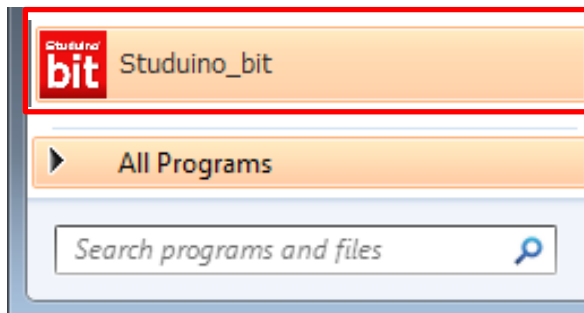
- ① Once you've finished the download, run **setup.exe**.
- ② After the installation has finished, start up the software.

## 2.3. Start Up

- ① Start up will work differently depending on your version of Windows. Follow the instructions below for the version you use.

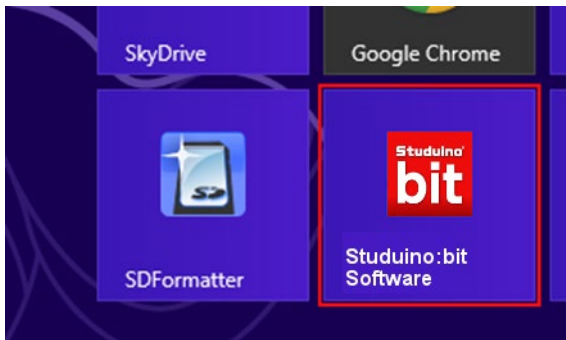
### Windows 7

Select **Studuino\_bit** from the Start menu to open the software. If you cannot find the **Studuino\_bit** icon in the Start menu, click **All Programs** and choose **Studuino\_bit** from the **Artec** folder to open the software.



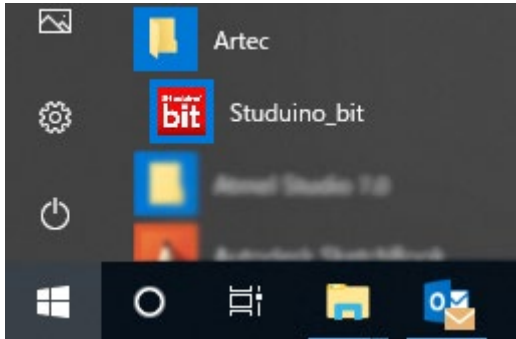
### Windows 8.1

Start the software by choosing the **Studuino:bit Software** tile on the Metro screen.

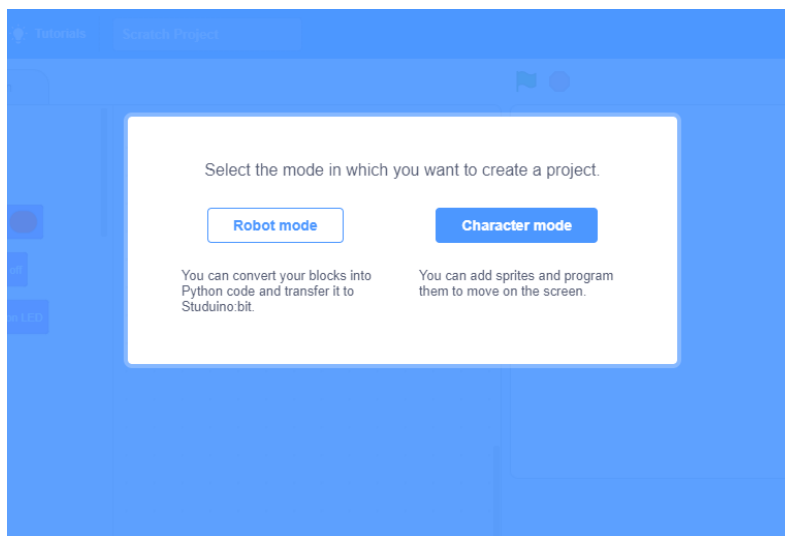


## Windows 10

Start the software by choosing the **Studuino\_bit** tile from the Start menu.



② You can pick your mode from the Startup screen.



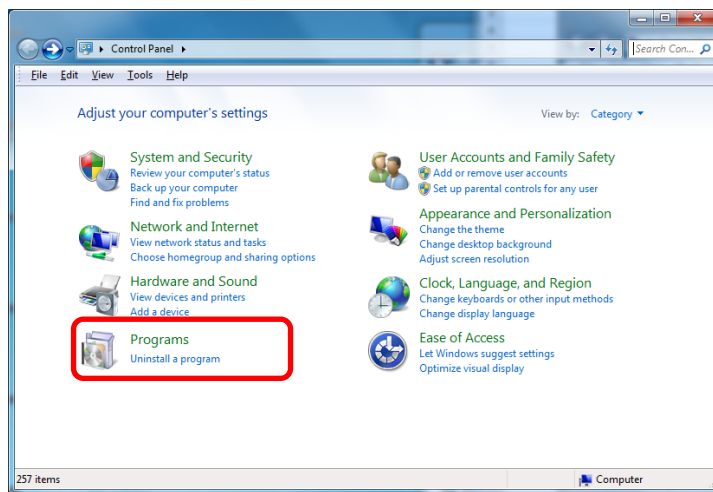
## 2.4. Uninstalling the Software

You will need to follow a different process depending on your version of Windows. Follow the instructions below for the version you use.

① Go to the **Control Panel** in your Windows computer.

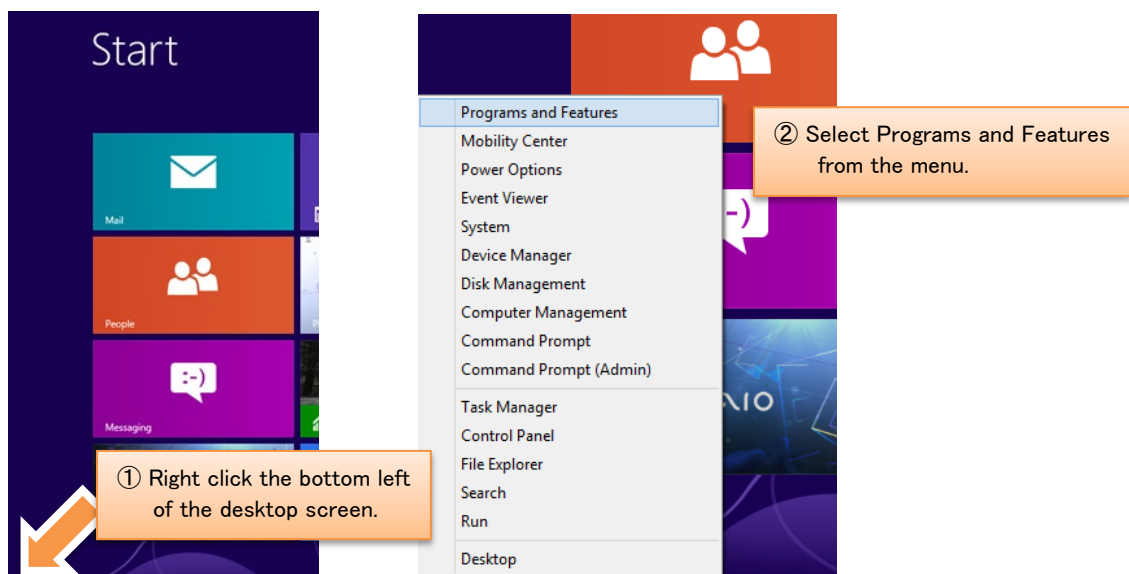
### ● Windows 7

Select **Uninstall a program** under **Programs**.



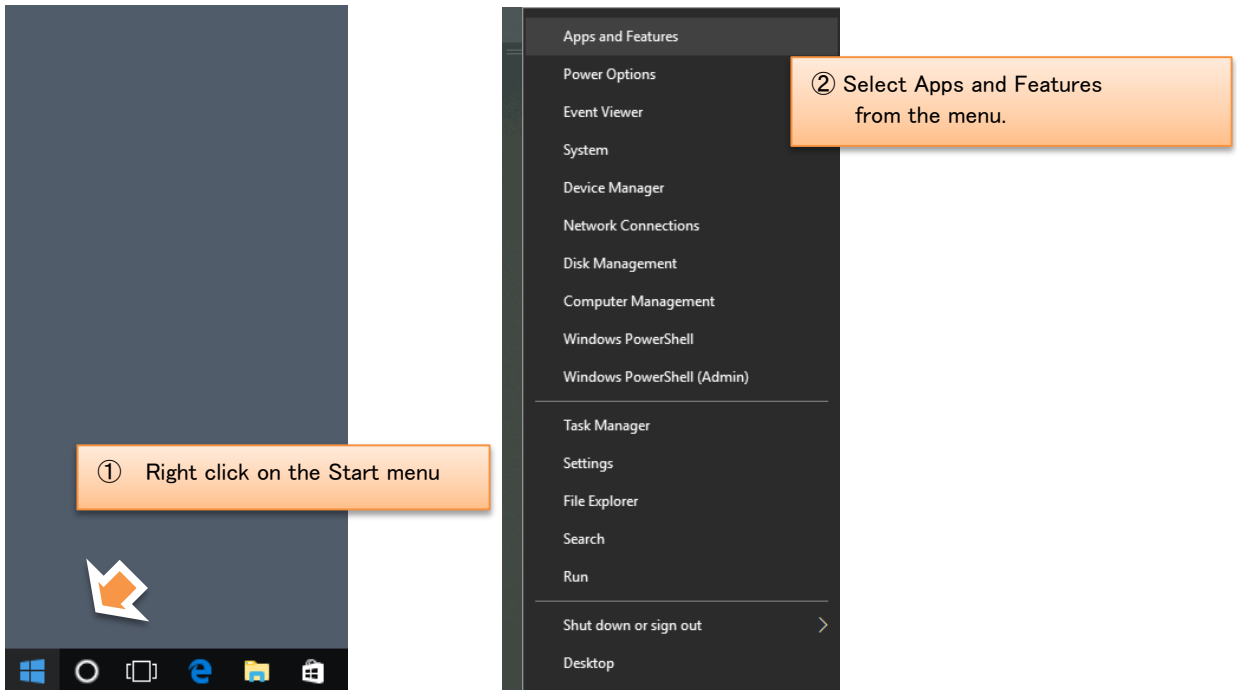
### ● Windows 8.1

Right click the bottom left corner to show the system management menu and select **Programs and Features**.

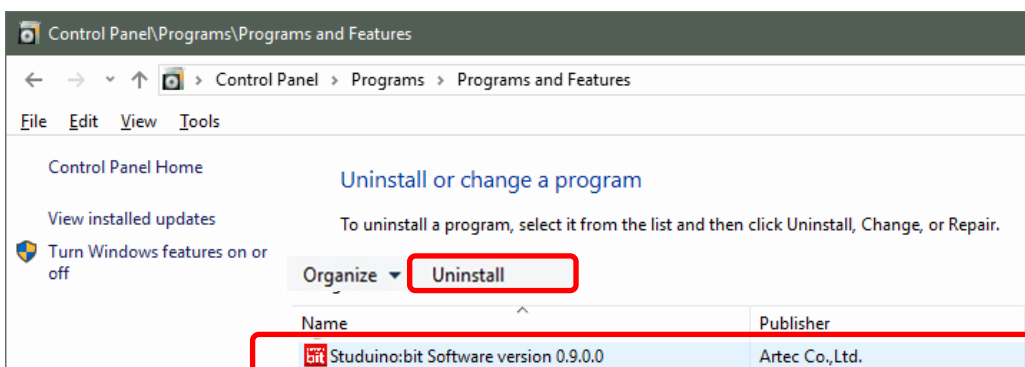


## ● Windows 10

Right click the Start menu to show the system management menu and select **Apps and Features**.



② Select **Studuino:bit Software** and click **Uninstall**.



### 3. Installing USB Device Drivers

If you are using Windows 8.1 or 7 you will need to install USB device drivers. Download the installation files, then begin the setup process. If the PC on which you intend to install the drivers does not have an internet connection, download on another PC with an internet connection and then transfer to the intended PC using a USB flash drive or other storage device.

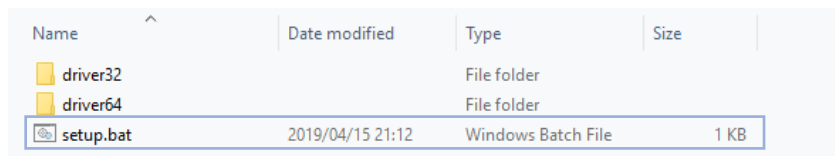
Performing the installation requires administrator privileges.

#### 3.1. Downloads

- ① Go to the ArtecRobo 2.0 website at <https://www.artec-kk.co.jp/artecrobo2/en/>
- ② Go to the **Software & Downloads** section.
- ③ Click the **USB Device Driver Download** button under **Windows** on the next page.

#### 3.2. Installation

- ① Once you've finished the download, decompress the **stduino\_bit\_driver.zip** file.
  - ★ The file extension (.zip) may or may not be displayed depending on your PC's settings.
- ② After decompression the folder should contain the files shown below.



Name	Date modified	Type	Size
driver32		File folder	
driver64		File folder	
setup.bat	2019/04/15 21:12	Windows Batch File	1 KB

Double-click on **setup.bat** and follow the steps to install the driver.

- ★ The file extension (.bat) may or may not be displayed depending on your PC's settings.
- ③ After installation is complete, connect your Stduino:bit Core Unit to your PC via USB cable.



- ④ The USB device driver has been installed if you see a balloon pop-up to the lower right of your monitor which says "Device driver software installed successfully."

