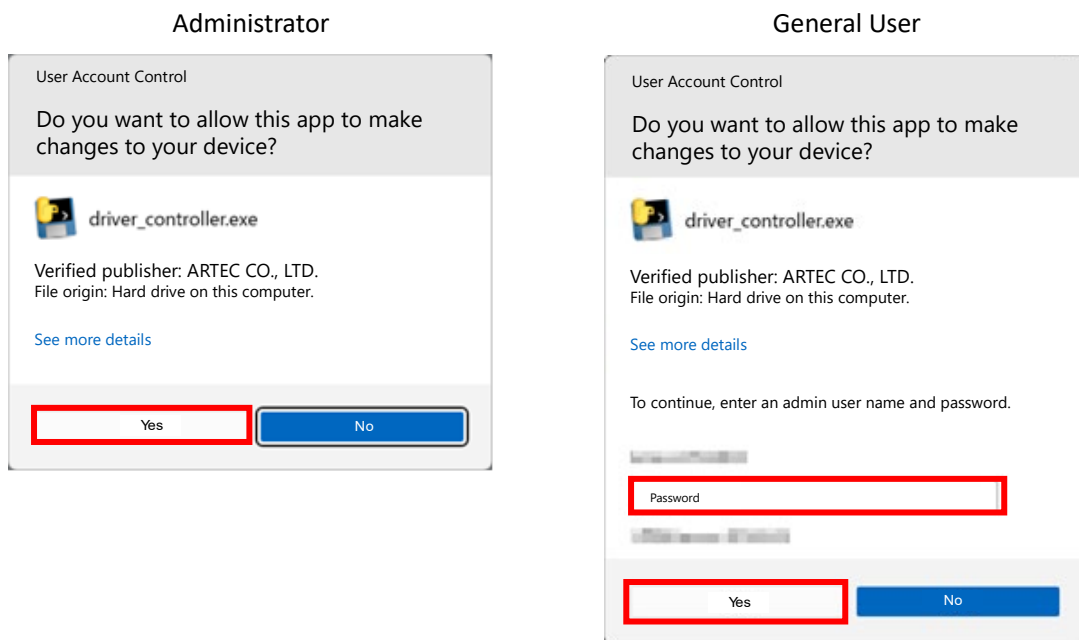


## Getting Started

Even when a Studuino-compatible device driver is already installed, Windows 11 may automatically switch to an incompatible driver. Version 1.6.0.0 or higher of the Studuino software will automatically switch back to the correct driver.

## Setting Device Drivers

When starting up the software and connecting to your Studuino the first time<sup>(★1)</sup>, you'll see the **User Account Control** screen below. Click **Yes** to set the drivers. General users will need to type in the administrator password.



If you want to skip automatic driver configuration, click **No**.

This will leave the non-compatible driver as-is. Refer to **2.3. Checking the Connection** in the document below to select the correct driver.  
[https://www.artec-kk.co.jp/studuino/docs/en/Studuino\\_setup\\_device\\_driver.pdf](https://www.artec-kk.co.jp/studuino/docs/en/Studuino_setup_device_driver.pdf)

You'll see the console window below. It will disappear once the device driver is installed.

```
adding driver packages: ser2pl.inf
Driver package added successfully. (Already exists in the system)
Published Name: oem27.inf
Driver package is up-to-date on device: USBVVID_0678B8PID_2303V54253ca081
Driver package installed on device: USBVVID_0678B8PID_2303V54253ca082

Total driver packages:
Added driver packages:
Get all devices information
[{"Instance ID": "USBVVID_0678B8PID_2303V54253ca081", "Device Description": "PL2303TA DO NOT SUPPORT WINDOWS !! OR LATE
PLEASE CONTACT YOUR SUPPLIER.", "Class Name": "Ports", "Class GUID": "{4d8e978-e325-11ce-bfcl-08002be10318}", "Manuf
acturer Name": "Prolific", "Status": "Started", "Driver Name": "oem27.inf"}]
[{"Instance ID": "USBVVID_0678B8PID_2303V54253ca081"}]
Microsoft PnP Utility

Removing device: USBVVID_0678B8PID_2303V54253ca081
Device removed successfully.

Get all driver information
[{"Published Name": "oem27.inf", "Original Name": "ser2pl.inf", "Provider Name": "Prolific", "Class Name": "Ports", "C
lass GUID": "{4d8e978-e325-11ce-bfcl-08002be10318}", "Driver Version": "11/22/2023 3.9.6.2", "Signer Name": "Microsoft
Windows Hardware Compatibility Publisher"}]
[{"Instance ID": "USBVVID_0678B8PID_2303V54253ca081"}]
Microsoft PnP Utility
```

The software will connect to the Studuino once the driver is installed<sup>(★2)</sup>. You won't have to repeat this process once the appropriate driver is configured. Please note that Windows Updates may reset the drivers, causing this process to repeat when you attempt to connect to the Studuino.

★ This includes using Test Mode or transferring programs.

★ Your PC hardware may result in the connection time being too fast to finish setting up the driver. Try reconnecting after the console window disappears if this happens.